



kimpur

KIMTEKS POLYURETHANE



kim PLUS[®]
AUXILIARY MATERIALS

- ◆ Release Agents
- ◆ Liquid Color Masterbatches

KIMplus Auxiliary Materials

The release agents developed by **Kimpur** for convenience in the production of polyurethane systems and liquid color masterbatches designed with suitable binders used to color polyurethane are collected under **KIMplus** Auxiliary Materials product line.

Release agents provide easy and non-deformable release of the product from the mold by forming a layer between the polyurethane and the mold, while liquid color masterbatches are used to color polyurethane systems.

Release Agents

AREAS OF APPLICATION

- Footwear Industry
- Automotive Industry
- Furniture Industry
- Construction Industry



ADVANTAGES

- Ease of application
- Production efficiency with the advantage of weight
- Cost benefit
- Smooth skin appearance
- High system performance
- Skin alternatives with different characteristics
(Dry, wet, mat, semi-mat, glossy, semi-glossy)

KIMrelease Release Agents Developed for Footwear Systems

PRODUCT	PRODUCT TYPE	DEFINITION
KIMrelease FW 005	Solvent-Based	High-solid, glossy-finish release agent. Suitable for sole, slipper, single-density safety shoes injection and single-density PU boot applications.
KIMrelease FW 006	Water-Based	Water-based release agent with 64% silicone ratio. Suitable for eva and rubber manufacturing. Dilutable at the desired rate.
KIMrelease FW 007	Solvent-Based	High-solid, silky and semi-mat finish release agent. Suitable for dual-density safety shoes injection and dual-density PU boot applications.
KIMrelease FW 008	Solvent-Based	High-solid, ultra glossy-finish release agent. Suitable for slipper manufacturing. Not suitable for subsequent painting and gluing.
KIMrelease FW 009	Solvent-Based	Low-solid, dry mat surface-finish release agent. Suitable for foam applications such as fussbet, memory foam, etc.
KIMrelease FW 010	Water-Based	Water-based release agent with medium-solid silicone ratio. Suitable for eva injections. Dilutable at 1/8.
KIMrelease FW 011	Oil-Based	100% solvent-free mold release compound. Glossy-finish release agent. Suitable for sole, slipper, single-density safety shoes injection and single-density PU boot applications.
KIMrelease FW 012	Solvent-Based	Mid to high-solid, glossy-finish release agent. Suitable for sole, slipper, single-density safety shoes injection and single-density PU boot applications.
KIMrelease FW 013	Water-Based	High quality water-based release agent emulsion developed for the production of double density polyester polyurethane direct injection soles, slippers and shoes.
KIMrelease FW 014	Water-Based	High quality water based release agent emulsion developed for the production of single density polyester polyurethane soles, slippers and injection soles.



KIMrelease Release Agents Developed for Rigid Applications

PRODUCT	PRODUCT TYPE	DEFINITION
KIMrelease RGD 001	Solvent-Based	Especially suitable for low-density rigid polyurethane foam (rising foam) applications (solar energy and boiler applications, etc.). Ready to use
KIMrelease RGD 002	Solvent-Based	An easy-to-paint, silicone-free release agent suitable especially for high density rigid polyurethane foam applications (wood imitation applications, etc.). Ready to use
KIMrelease RGD 003	Solvent-Based	Intense thickness release agent suitable for general rigid polyurethane foam applications (cold room, discontinue panel applications, etc.). Ready to use
KIMrelease RGD 004	Solvent-Based	Solid release agent suitable for general rigid polyurethane foam applications. Also used as mold preparation and running-in product.
KIMrelease RGD 005	Water-Based	Release agent especially suitable for low-density rigid polyurethane foam (rising foam) applications. Ready to use



KIMrelease Release Agents Developed for Integral Foam and RIM Applications

PRODUCT	PRODUCT TYPE	DEFINITION
KIMrelease FIW 001	Solvent-Based	Semi-glossy-finish release agent suitable for microporous polyurethane applications such as integral. Suitable for in-mold paint IMC. Ready to use
KIMrelease FIW 002	Water-Based	Semi-mat-finish release agent suitable for microporous polyurethane applications such as integral. Suitable for in-mold paint IMC. Ready to use
KIMrelease FIW 003	Solvent-Based	Semi-mat-finish release agent suitable for microporous polyurethane applications such as integral. Suitable for in-mold paint IMC. Ready to use
KIMrelease FIS 001	Solvent-Based	Low-solid, glossy-finish release agent suitable for microporous polyurethane applications such as integral. Ready to use
KIMrelease RIM 001	Solvent-Based	Glossy-finish release agent especially suitable for RIM polyurethane applications. Ready to use

KIMrelease Release Agents Developed for Flexible Foam Systems

PRODUCT	PRODUCT TYPE	DEFINITION
KIMrelease FCW 001	Water-Based	High-solid, glossy and medium-wet finish release agent. Suitable for flexible foam applications such as office furniture, car seat, insulation applications, etc.
KIMrelease FCW 002	Water-Based	High-solid, dry mat surface-finish release agent. Suitable for flexible foam applications such as office furniture, car seat, insulation applications, etc.
KIMrelease FW 009	Solvent-Based	Low-solid, dry mat surface-finish release agent. Suitable for flexible foam applications such as office furniture, car seat, insulation applications, etc.



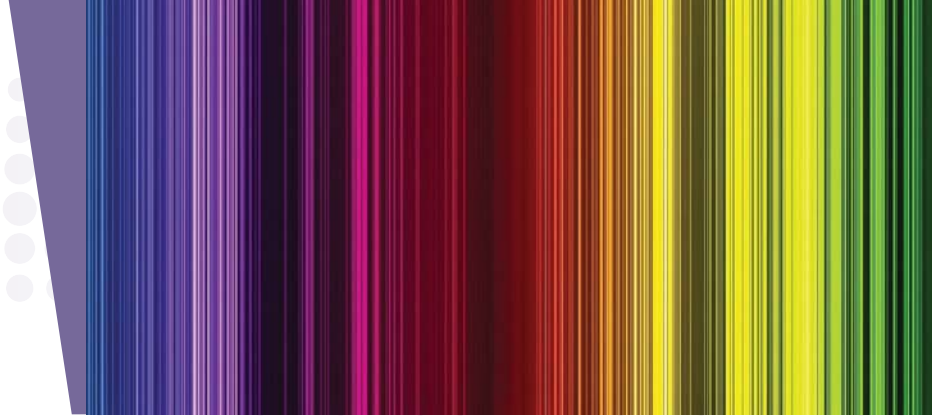
KIMrelease Release Agents Developed for Cast Elastomer Systems

PRODUCT	PRODUCT TYPE	DEFINITION
KIMrelease CEW 001	Concentrated Solvent-Free Oil-Based	100% concentrated release agent. Suitable for polyurethane hot casting applications. It can be used at high mold temperatures (max 150°C) and diluted with suitable solvents.
KIMrelease CEW 002	Concentrated Solvent-Free Oil-Based	100% concentrated release agent. Suitable for polyurethane hot casting applications. The product acts as an anti-foaming for drifting and preventing air bubbles and foams formed during the mixing phase.
KIMrelease CES 001	Includes Solvent	High solid release agent. Suitable for polyurethane hot casting applications. It can be used at high mold temperatures (max 150°C). Ready to use

Liquid Color Masterbatches

AREAS OF APPLICATION

- Footwear industry
(Sole and slipper manufacturing)



ADVANTAGES

- Customized production in line with customer demands
- Perfect surface compatibility
- High dyeing power
- Production efficiency
- Excellent fluidity properties
- High light fastness
- 1-5% utilization rate
- Resistance to high temperatures
- Broad color scale

KIMcolor Sıvı Renklendiriciler

KIMcolor FW 001 – Black Series

KIMcolor FW 002 – Grey Series

- KIMcolor FW 002-1 (Dark grey with blue tones)
- KIMcolor FW 002-2 (Light grey with yellow tones)

KIMcolor FW 003 – Beige Series

KIMcolor FW 004 – Brown Series

KIMcolor FW 005 – White Series



KIMcolor Sprey Boyalar

KIMcolor FW 1000 – Black Series

KIMcolor FW 1100 – Grey Series

KIMcolor FW 1200 – Beige Series

KIMcolor FW 1300 – Brown Series

KIMcolor FW 1400 – White Series

Please contact our sales office for more information about the products, TDSs and MSDSs.

THE POLYURETHANE SYSTEM HOUSE OF TURKEY

SINCE
1983

Turkey's Top

500 ISO

Industrial Enterprises

Turkey's Largest

500 FORTUNE

Companies

1000 TIM
TOP 1000 EXPORTERS OF TURKEY

PRODUCTION CAPACITY

120.000
TONS



Kimpur Means Mutual Trust and Cooperation



Kimpur Means Quality



Kimpur Means Fast Approach to Market Challenges



Kimpur Means Strong Communication Networks with Its All Stakeholders



Kimpur is an Innovator and Solution Provider



Kimpur Means Experience



Kimpur is Sensible to The Environment



Kimpur is a Leading and Technology-Oriented Company





KİMTEKS POLİÜRETAN SANAYİ VE TİCARET A.Ş.

HEAD OFFICE :

Emniyet Evleri Mah. Eski Büyükdere Cad.
Sapphire Plaza No:1/4 Kat: 19 D:01
Kağıthane 34415 İstanbul TÜRKİYE

Phone: +90 212 809 15 50

Fax : +90 212 809 15 49

GEBZE FACTORY :

Gebze Plastikçiler Organize
San. Bölgesi 7. Cadde No:43
41400 Gebze Kocaeli TÜRKİYE

Phone: +90 262 751 44 71

Fax : +90 262 751 02 57

GAZİANTEP :

Sanayi Mah. Modern Sanayi Sitesi
60363 Nolu Cad. Zemin Kat No: 82
Şehitkamil Gaziantep TÜRKİYE

Phone: +90 342 325 57 97

Fax : +90 342 325 57 97